

BLACK TOWER (BLACK FOREST) N ↑



LEVEL 1

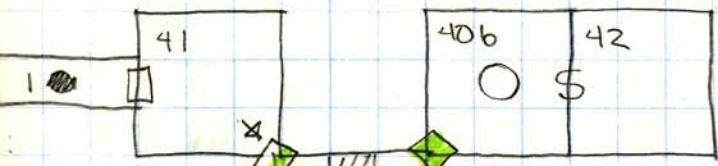
- ADD 2 POINTS TO
- 1 STR
 - 2 INT
 - 3 WIS
 - 4 DEX
 - 5 CON
 - 6 CHAR

LEVEL 1

- 1 BRICKS UP AROUND PIT
- 4 MONSTER RICKETY WOOD FLOOR PIT 30'
- 8 SPIKES MONSTER
- 15 DOOR COVERED IN IRON (SIDE)
- 19 STONE TABLE
- 20 WOOD FLOOR SOUND

40a WATER

40b



41 CRACKED FLOOR, PIT TO 30' SUPPORTS 220 LBS

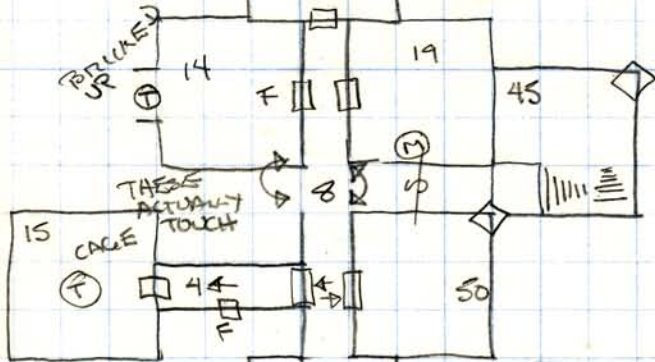
42 SECRET ROOM MONSTER + TREASURE

(M) - BEYOND THE BRICK WALL LINES THE CAVE OF STEEL

45 DOWN TO LEVEL 2 MONSTER + TREASURE

46 DOOR JUST INSIDE N/W ALCOVE 40' PIT

50 DOOR JUST INSIDE ALCOVE CANTROPS ON FLOOR



LOWERS TO FLAMING OIL
15 - 3 / 9

DOWN UNDER FLOOR LEVEL 2 ROOM 16
MAGNET CRIMINAL

IN CHEST GUARDED BY STONE BLOCK DROPS FROM CEILING

- 4 I GIANT BAT X5 AC8 1HD 1-2R-4
- 8 III BONESNAKE X3 AC4 4HD 1-8/1-4
- 42 I ZOMBIE 3-AC8 2HD 1-8
- C + 45 II ANKHEG 2 AC2/4 3HD 3-18(+174)

2 JEWELS

2 MAPS MAGIC

SCROLL PROTECTION DEMONS (25000 XP RANGE)

POTION POLYMORPH SELF

UNRECORDED MOVED

10
9
8

X - 9
15 - 12

AC 3/7

LEVEL 2

2 MONSTER

7 FIRE IN MIDDLE
BRICKED UP AT END

13 PIT BRICKED UP WALLS

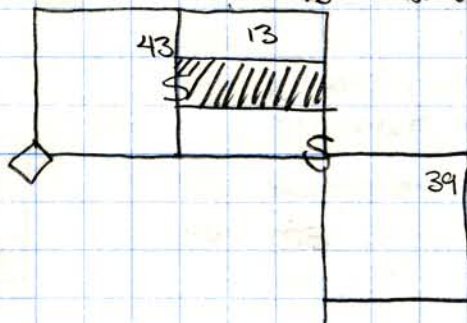
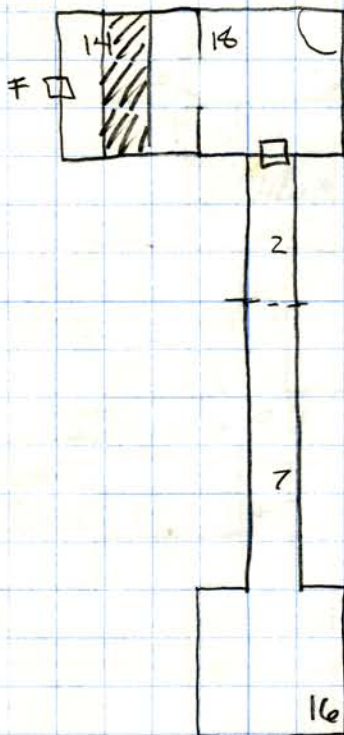
14 PIT BOARDS RICKETY

16 MONSTER + TREASURE
MIRROR ON E WALL

18 MONSTER + T
IDOL OF DIS

39 PRIESTS ANCHOR, MONSTER

43 MONSTER



POTION
CLIMBING

ASU

GUARDED BY SPEARS IN WALLS WHEN SACK LIFTED

B T 18
5000 CP

2	I	HORRGOBLIN	5	AC5	1+1	RO ^{OR}	18		
16	II	GASSPORE	2	AC9	1HP		5		
18	II	COFFER COMPSE	1	AC8	2HD		1-6		
39	III	SPIDER HUGE	1	AC6	2+2		1-6+5		
43	II	ANKHEE	2	AC 2/4	3HD		3-18(1-4)		